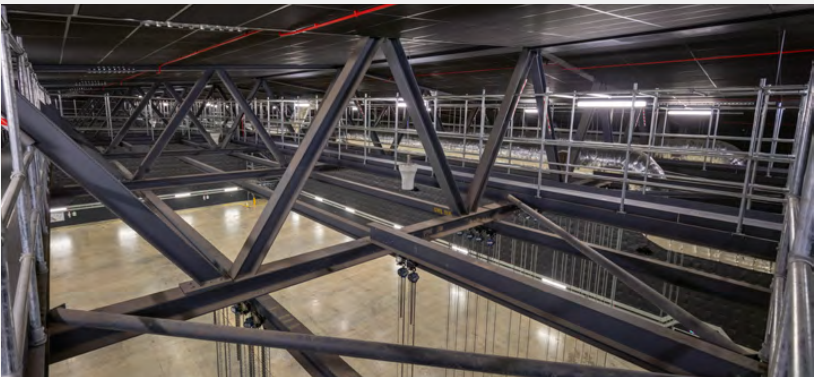
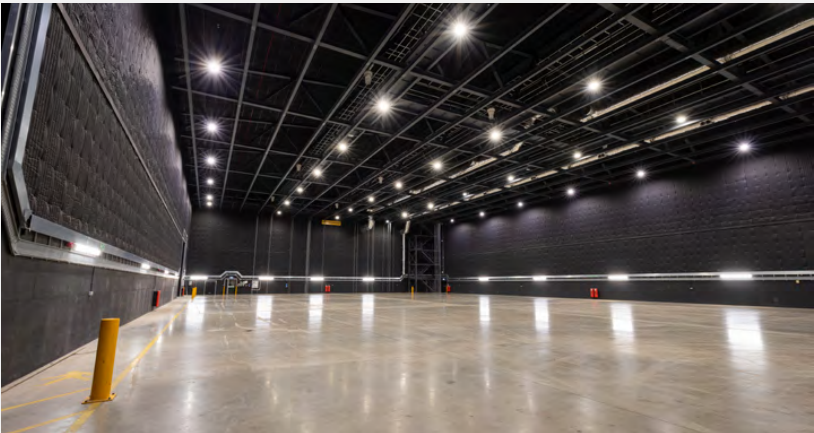


# STAGE C    20,000ft<sup>2</sup> / 1,858m<sup>2</sup>



## Dimensions

Height	37 ft	11.3 m
Width	111 ft	34 m
Length	188 ft	57.7 m

## Electrics

Single phase double sockets	18 x 13 Amp
Single phase sockets	3 x 16 Amp
Three phase sockets	1 x 63 Amp
	2 x 125 Amp

6 x Powerlock  
Red light and bell system

## Rigging

REDs with specified weight loading limits:  
14 Running beams  
4,000kg Maximum per beam  
500kg safe working load per span  
Gantry walkways with a Kee Klamp system

## Structure Materials

Concrete floor pad  
Full acoustic Lining

## Access

2 Mechanically operated acoustic 30db roller doors  
2 Pedestrian single doors  
4 Double fire exit doors  
4 Acoustic cable hatches

## Fire Detection System

Aspiration fire detection system

## HVAC System

HVAC system operated by internal panel to provide heating, cooling and air circulation.  
Pyro and smoke extraction

## Internet

Wifi and UniFi network solution