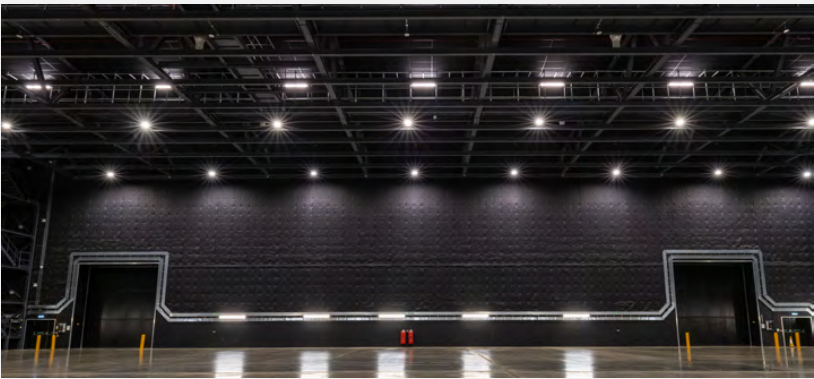
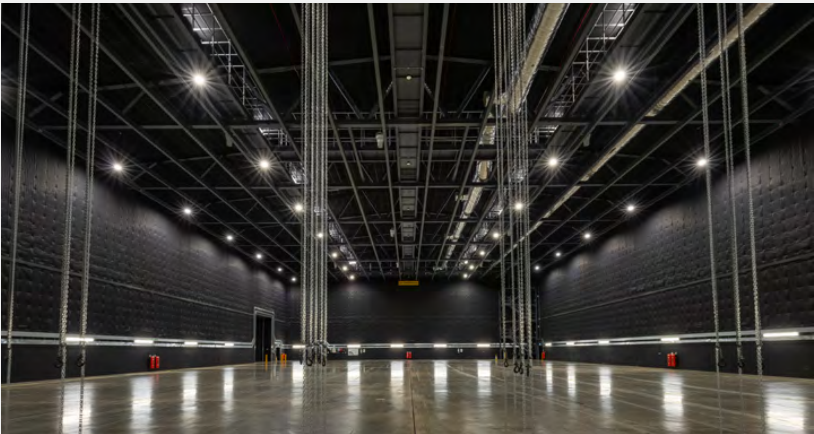


STAGE A 20,000ft² / 1,858m²



Dimensions

Height	36 ft	11 m
Width	111 ft	34 m
Length	188 ft	57.7 m

Electrics

Single phase double sockets	16 x 13 Amp
Single phase sockets	4 x 16 Amp
Three phase sockets	2 x 32 Amp
	2 x 63 Amp
	2 x 125 Amp

6 x Powerlock
Red light and bell system

Rigging

REDs with specified weight loading limits:
14 Running beams
4,000kg Maximum per beam
500kg safe working load per span
Gantry walkways with a Kee Klamp system

Structure Materials

Concrete floor pad
Full acoustic Lining

Access

2 Mechanically operated acoustic 30db roller doors
2 Pedestrian single doors
4 Double fire exit doors
4 Acoustic cable hatches

Fire Detection System

Aspiration fire detection system

HVAC System

HVAC system operated by internal panel to provide heating, cooling and air circulation.
Pyro and smoke extraction

Internet

Wifi and UniFi network solution